



**R.J. O'Brien Limited**

FRN: 114120

# **MIFIDPRU 8 Disclosures**

**30 June 2026**

---

<b>1. INTRODUCTION .....</b>	<b>2</b>
<b>2. BUSINESS STRATEGY .....</b>	<b>2</b>
2.1 BUSINESS DEVELOPMENTS .....	2
<b>3. RISK MANAGEMENT OBJECTIVES AND POLICIES .....</b>	<b>3</b>
3.1 RISK MANAGEMENT PROCESS.....	3
3.2 RISK STRATEGY .....	3
3.3 RISK CULTURE AND KEY PILLARS .....	4
3.4 RISK MANAGEMENT STRUCTURE AND GOVERNANCE.....	4
3.5 KEY RISKS AND RISK APPETITE .....	4
<b>4. GOVERNANCE ARRANGEMENTS.....</b>	<b>9</b>
4.1 BOARD OF DIRECTORS .....	9
4.2 BOARD DIVERSITY .....	9
4.3 BOARD COMMITTEES .....	9
<b>5. OWN FUNDS RESOURCES .....</b>	<b>12</b>
<b>6. OWN FUNDS REQUIREMENTS .....</b>	<b>13</b>
6.1 BASE OWN FUNDS REQUIREMENT .....	13
6.2 APPROACH TO ASSESSING THE ADEQUACY OF OWN FUNDS .....	13
<b>7. REMUNERATION POLICY AND PRACTICES .....</b>	<b>15</b>
7.1 REMUNERATION COMMITTEE .....	15
7.2 MATERIAL RISK TAKERS .....	15
7.3 TYPES OF REMUNERATION .....	16
7.4 QUANTITATIVE REMUNERATION DISCLOSURES.....	18

## 1. Introduction

Headquartered in Chicago, the R.J. O'Brien Group ("RJO Group") is the largest and oldest U.S. independent futures brokerage and clearing firm, and has been in operation for over a century. In the UK, R.J. O'Brien Limited ("RJOL" or the "the Firm"), provides execution and clearing in futures and options in the derivatives and equity markets.

This document sets out the public disclosures for RJOL, in accordance with MIFIDPRU 8, as at 31 December 2025, which represents the end of RJOL's financial accounting period. The financial figures disclosed within this document are derived from the 2025 Audited Financial Statement.

Under the prudential firm classification, set out in MIFIDPRU 1.2, RJOL is categorised as a non-Small Non-Interconnected investment firm ("non-SNI").

The disclosure for RJOL is prepared annually, on a solo entity (i.e. individual) basis. The disclosed information is proportionate to the organisation's nature, scope and complexity.

## 2. Business Strategy

The Firm offers execution and clearing across multiple asset classes. The major product groupings are:

- Screen and voice-executed, exchange-traded futures and options
- over-the-counter executed, cleared commodities contracts.
- cash bonds and cash equities

RJOL also provides ancillary real-time risk management across asset classes; tailored post-trade services; proximity and colocation services; and front, middle and back-office outsourcing solutions for selected sell-side clients and brokerage firms. There are robust risk management procedures to ensure daily coverage of any potential exposure.

### 2.1 Business Developments

#### 2.1.1 StoneX Acquisition

Following regulatory approval for a change in control application, the StoneX Group Inc. ("StoneX") acquired the RJO Group on the 31<sup>st</sup> of July 2025. All of RJO Group's global operations, which includes RJOL, will be integrated into StoneX.

#### 2.1.2 Transfer of Business

In January 2026, following the reference date of this document, RJOL completed the transfer of its business to StoneX Financial Limited ("SFL", FRN: 446717), in order to consolidate the StoneX group's UK presence. This transfer migrated RJOL's transactional execution & clearing business and the corresponding client money to SFL.

RJOL will keep necessary regulatory permissions to fulfil its remaining obligations, including returning funds to gone-away and dormant clients, and supporting the Firm's eventual wind-down.

### 3. Risk Management Objectives and Policies

RJOL has in place robust processes to identify and monitor risks and potential harms. Material harm is any risk of loss resulting from inadequate or failed internal processes, people, and systems, or from external events.

The Firm seeks to minimise material harm by applying industry-standard risk management systems and controls. As such, the Firm has put in place a robust risk management framework that aims to identify, assess, control and mitigate harms and champion effective reporting of emerging risks. It is managed by the Risk Department and forms part of the Board of Directors' responsibility.

RJOL's risk management framework comprises the following components:

- Risk governance;
- Risk strategy;
- Risk appetite;
- Risk register with control assessment;
- Own funds and liquidity adequacy monitoring.

#### 3.1 Risk Management Process

RJOL's risk management processes are governed by the Group-wide risk management policies and procedures. In line with the Group's risk management framework, RJOL conducts a continuous process of reviewing its risk environments.



#### 3.2 Risk Strategy

The Firm understands that it cannot eliminate all potential risks and therefore has set its risk appetite for the risks that are inherent in doing business. This is, therefore, designed to address risks that the Firm has determined to be material, or where the long-term cost of controlling the risk does not exceed the benefits provided by the control, and to:

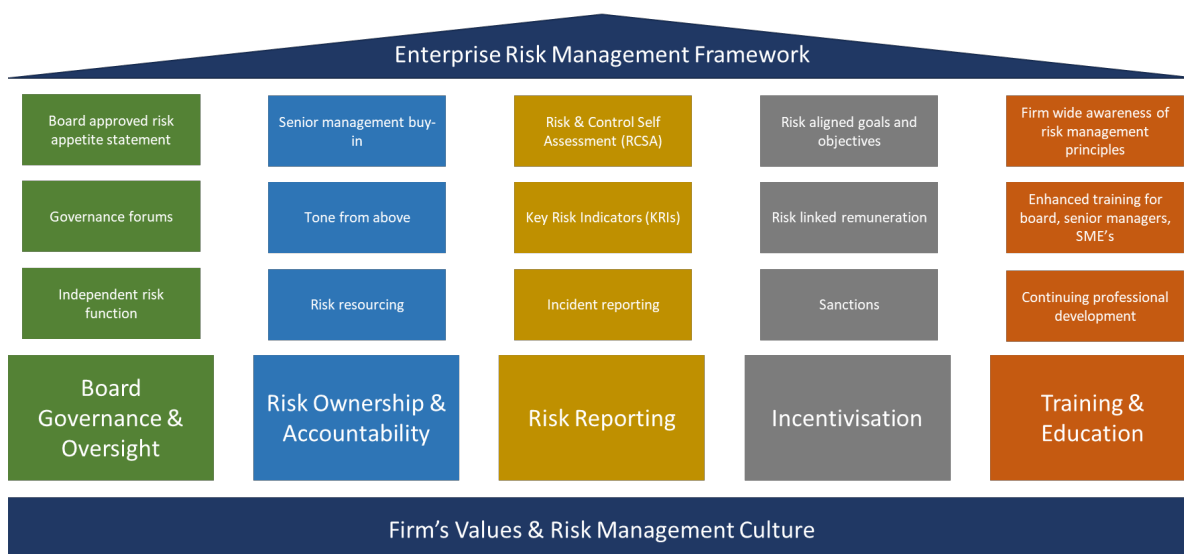
- Actively mitigate or avoid risks that could:
  - Negatively affect client funds on deposit
  - Lead to the breach of laws or regulations

- Negatively impact the Firm’s profitability
- Negatively affect the Firm’s reputation; and/or
- Endanger the future existence of the Firm.
- Comply with applicable regulations.
- Control risks.
- Communicate and escalate risks & enhance risk awareness.
- Ensure adequate planning for risk related events.

### 3.3 Risk Culture and Key Pillars

A strong risk management culture within an organization promotes early identification and mitigation of potential threats, supporting strategic resilience and informed decision-making. This culture enhances accountability, transparency, and ethical behaviour, fostering a more cohesive and responsible work environment. RJOL's enterprise risk management framework is built on these values, supported by the following five key pillars that ensure effective management of risks:

- Governance & Oversight;
- Risk Ownership & Accountability;
- Risk Reporting;
- Incentivisation; and
- Training & Education



### 3.4 Risk Management Structure and Governance

RJOL has a risk governance structure in place to ensure effective management of key risks the Firm faces. The overall responsibility for the risk management of RJOL rests with the Board.

### 3.5 Key Risks and Risk Appetite

The Firm faces risks daily as it serves clients and operates within the financial markets. The risks that the Firm takes align with its strategic vision and willingness to accept a degree of volatility in earnings and occasional losses.

In general, the Firm is willing to take risks that are customary for independent futures commission merchants to effectively provide middle-market clients with execution and clearing services. However,

the Firm values its long-held strong reputation and requires management and staff to maintain a high standard of ethical conduct. The Firm considers itself as conservative when extending financing to clients.

**The main risks that RJOL is exposed to are as follows:**

**3.5.1 Credit Risk**

Credit risk is the risk of a client or other counterparty defaulting on a payment or settlement obligation to the Firm. Credit risk arises from three sources:

- Clients: The Firm guarantees customer performance to exchange(s) and carrying broker(s). If a client defaults on its obligations, the Firm may experience a loss. The firm mitigates these risks by:
  - Proof of financial resources. Clients are required to provide proof of their financial resources to show ability to fund their positions.
  - Trading limits. Trading limits are established to ensure that position sizes do not exceed the client's means to support them.
  - Credit review. A credit review is undertaken on every client at the point of onboarding, and the client's credit standing will be checked periodically, with the frequency of review informed by post-trade stress testing. Clients of lower credit standing will be required to deposit funds in excess of standard margin requirements.
- Banks: Banks hold the Firm's working capital and client money, held under the FCA's CASS rules. At any point in time, banks hold substantial funds, and a default of a bank may cause the Firm irreparable harm. This could include credit losses (if monies are never returned), as well as a loss of liquidity.
  - Diversification. The Firm considers both operational and concentration risk when setting diversification levels for both its client and house cash.
  - Credit review. The risk management function undertakes detailed credit analysis on all banking institutions with whom the Firm holds working capital and client money.
- Carrying brokers/Exchanges: RJOL provides its clients with access to the world's leading exchanges. The Firm is a direct clearing member of the London Metal Exchange ("LME"), whereas it uses carrying brokers to provide access to other exchanges and clearing houses. The Firm uses affiliated companies in the United States and Canada as well as unaffiliated third-party carrying brokers. The Firm is obliged to deposit funds with carrying brokers as part of the arrangement to use their services. If a carrying broker serving RJOL was to default, the Firm could experience a loss of some, or all the funds deposited with that clearing broker. In addition, a carrying broker default would cause significant operational disruption, loss of liquidity, and potential monetary loss.
  - Account limits. There are limits for both client omnibus ("segregated") and Firm ("non-seg") accounts. These limits are set by the Credit Committee and reviewed at least annually.
  - A preference for affiliated companies. New client accounts usually use the Firm's well-capitalised U.S. affiliate as the carrying broker.
  - Backups. Where feasible, the Firm will maintain backup arrangements to ensure prompt access should a carrying broker become unavailable.
  - Credit review. The risk management function undertakes detailed credit analysis on all 3<sup>rd</sup> party carrying brokers with whom the Firm holds working capital and client money.

### 3.5.2 Liquidity Risk

Liquidity risk is the risk that a company, although a going concern, either does not have sufficient financial resources available to enable it to meet its obligations as they fall due, or it can only secure such resources at excessive cost.

At RJOL, liquidity risk is driven predominantly by transient mismatches between client and exchange/carry broker inflows/outflows. In situations when clients do not send margin due to RJOL in a timely manner, the Firm might need to advance funds on the client's behalf to the exchanges/carry brokers, resulting in a short-term drain on the Firm's liquid resources. If a sufficiently large volume (in nominal terms) of calls is received and clients do not post quickly enough, the Firm may face a liquidity issue.

The Firm mitigates these risks by:

- Daily monitoring. The Firm monitors its available liquidity on an intra-day basis to ensure that it has sufficient available liquidity at all times.
- Liquid reserves. Resources are maintained in bank accounts or (in the case of own funds) in low-risk investments.
- Diversification. The Firm considers both operational and concentration risk when setting diversification levels for both its client and house cash.
- Margin management. The risk management function monitors margin requirements from exchange and carrying brokers actively. Margin calls are made promptly to clients and unanswered calls are actively tracked and pursued. The Firm can call clients intra-day for margin if necessary. In advance of known extended regional holidays, the risk management team will assess clients impacted and will call for additional funds to cover the period if required.
- Credit analysis. The risk management function undertakes detailed credit analysis on larger clients which incorporates an analysis of each client's liquidity position and ability to pay. The Firm may require higher than exchange margins from clients, which builds a liquidity buffer and for larger clients the Firm will also set margin limits, above which the client will be restricted from further trading.
- Credit Facilities. The Firm has a number of committed and uncommitted intra-day and overnight facilities to mitigate transient mismatches between client and exchange/carry broker inflows/outflows.
- Liquidity Stress Modelling. The Firm conducts daily stress testing on its liquidity position as part of its comprehensive liquidity risk management strategy. The primary goal of the stress model is to develop a forward-looking set of severe but plausible liquidity stress tests, considering both short and long-term scenarios.

### 3.5.3 Operational Risk

Operational risk is defined as the risk of loss resulting from inadequate or failed internal processes, people, and systems, or from external events or third parties.

The Firm mitigates these risks by:

- Internal and External Audit. The Firm engages specialists to carry out audits to provide industry perspective on best practices and potential control improvements.

- Business continuity / disaster recovery. The Firm has implemented business continuity and disaster recovery programs to ensure operations can continue in the event of disruption. The IT network and critical software applications are constantly monitored. Critical activities, including all business support functions and technologies that have a material impact on our financial resources are independently reviewed, approved, and monitored regularly. Pursuant to SYSC 15A, RJOL has established an operational resilience framework that identifies and tests its critical business services, sets impact tolerances, and conducts scenario exercises.
- Risk register and risk and control assessments. Operational risks are inventoried in a risk register and risk conducts assessments with input from the function identified as owner of each risk.
- Regulatory compliance policies and procedures. The Firm implements policies and guidance for employees to ensure full compliance with current laws, regulations, and other legal requirements.
- Reporting and escalation. The Audit & Risk Committee meets quarterly and reviews comprehensive reporting from the Firm's executive management team, including reports from the Compliance, Credit, CASS, and Capital Adequacy Committees.
- Insurance. The Firm maintains comprehensive insurance coverage including employers' liability, professional indemnity, public liability, travel and personal accident, business interruption, property, and cyber insurances.
- Regulatory compliance policies and procedures. The Firm implements policies and guidance for employees to ensure full compliance with current laws, regulations, and other legal requirements.
- Operational risk event investigation. All Operational Loss events are recorded and where appropriate, losses are investigated to determine if there is a need to strengthen controls.

### 3.5.4 Market Risk

Market risk is defined as the risk of loss arising from changes in the prices of financial assets or liabilities. As at the reference date, RJOL did not have any proprietary trading book positions. Therefore, market risk can only arise in the following ways at RJOL:

- Market risk can materialize if margin calls are not met by a defaulting client and the Firm becomes responsible for the client's positions. Since the market risk is contingent on a credit risk event (the client's default), it is addressed in section 3.5.1 Credit Risk.
- The Firm is exposed to market risk in the form of foreign currency (FX) risk. The Firm allows its clients to trade in products that are priced and margined in different currencies, and each client has an account which can operate on a multi-currency basis.

We seek to minimize risk without incurring undue cost monitoring positions and/or moving currencies more than necessary. For this reason, a framework for managing foreign currency positions exists, including these controls:

- Monitoring of FX Positions. The FX positions taken by us are monitored through review of nostro account balances and reports from carrying brokers.
- Sweeps to Home Currency. Positions in currencies other than the British Pound, exceeding tolerance, are reduced at least once a month.

### 3.5.5 CASS Risk

CASS risk is defined as the risk that the Firm does not fully comply with the applicable provisions of the Client Assets sourcebook (“CASS”) which could result in potential harm to clients which will result in a damaging effect on the Firm.

The Firm mitigates this risk by:

- Internal and External Audit. An internal audit is performed quarterly. This, as part of its third line of defence mechanism, provides assurance that the Firm’s CASS control framework is designed and operating effectively. Control weaknesses identified are discussed and monitored at the CASS Committee with immediate remedial actions implemented. The external audit is conducted annually in conjunction with the annual financial statement audit.
- Governance and Monitoring: In accordance with CASS 7.12.2, senior management is involved in the overall oversight and monitoring of daily CASS procedures. This involves, but is not limited to, review and signoff of the daily internal client money reconciliation. A quarterly CASS Committee is also chaired by the SMF with prescribed responsibility for CASS (“PRz”). This acts as a formal forum to raise, discuss, monitor and approve all CASS matters.

### 3.5.6 Concentration Risk

Concentration risk refers to the risk of loss arising from a firm’s exposures being concentrated in a specific area, such as:

- Counterparties or groups of connected counterparties;
- Clients or groups of clients;
- Sectors (e.g., economic sectors or geographical regions), instruments or asset classes;
- Or other sources of dependency that may cause the firm to suffer significant losses if an adverse event affects that concentrated area

### 3.5.7 Other Risks

Other risks that the Firm is exposed to include:

- Conduct and Financial Crime Risk
- Fraud
- Strategic and Business Risk
- Interest Rate Risk
- Reputational Risk
- Legal Risk

## 4. Governance Arrangements

### 4.1 Board of Directors

The Directors are ultimately responsible for the oversight of the Firm and for setting its strategy and monitoring its governance structure. The Firm's Board of Directors is ultimately responsible for ensuring adequate risk management arrangements and the provision of sufficient capital and liquidity.

RJOL holds quarterly board meetings where the Directors consider performance of the Firm, including strategic developments, market conditions and key management issues. The Board receives formal reports from senior management and the chairpersons of its sub-committees, including the Audit & Risk Committee ("ARC"). The Board will consider and review these reports to ensure that the Firm remains within its appetite for operational and other risks.

Following the business transfer to SFL, the composition of the Board has changed.

As of the 5<sup>th</sup> of January 2025 (business transfer date), the Board consists of 1 non-executives, and the Managing Director. The Chair is the Global Chief Financial Officer of the R.J. O'Brien Group.

The number of directorships held by members of the Board outside of the RJO Group were as follows:

Name	Position	Directorships Held
James Gabriele	Chairman: Non-Executive Director	-
Adam Solomons	Managing Director	-

### 4.2 Board Diversity

The Firm is committed to encouraging equality, diversity and inclusion among its workforce and eliminating unlawful discrimination. We believe diversity of backgrounds, experiences and thoughts increases innovation, fosters faster problem solving and results in better decision making. The Firm maintains an Equality, Diversity and Inclusion policy, which is fully supported by the Company's senior management and has been reviewed with employee representatives. The policies' purpose is to:

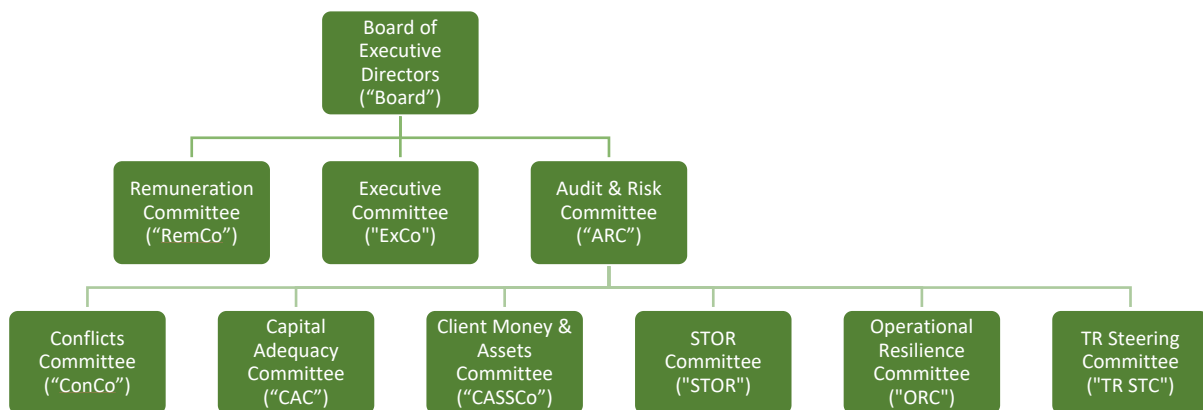
- Provide equality, fairness and respect for all in our employment, whether temporary, part-time or full-time.
- Not unlawfully discriminate against an employee, contractor, job applicant or visitor because of the Equality Act 2010 protected characteristics: age, disability, gender reassignment, marriage and civil partnership, pregnancy and maternity, race (including colour, nationality and ethnic or national origin), religion or belief, sex and sexual orientation.
- Oppose and avoid all forms of unlawful discrimination. This includes in pay and benefits, terms and conditions of employment, dealing with grievances and discipline, dismissal, redundancy, leave for parents, requests for flexible working, selection for employment, promotion, training or other developmental opportunities.

The policy also underlines how the Firm commits to these policies and has incorporated these into its employee handbook.

### 4.3 Board Committees

The Board is the governing body of the Company. The Board delegates responsibility to the various sub-committees that report to the Board on a periodic basis.

The Board delegates day-to-day management to the Executive Committee and a number of sub-committees. All committees have Terms of Reference clearly setting out their membership and responsibilities. The diagram below describes the Firm's governance structure.



**NB: As at the reference date of this document, 31 December 2025, the above committee and governance structure remained in place. However, following the business transfer to SFL (as noted in section 2.1), many of RJOL's committees were disbanded.**

**To ensure continued oversight and effective management within the Firm's governance structure, the responsibilities previously delegated by the Board to its sub-committees have been reallocated to the to the Board, and the terms of reference updated.**

#### 4.3.1 Remuneration Committee (RemCo)

The RemCo is authorised by the Board and assigned responsibility for the oversight and implementation of the remuneration policy. Please see section 7.1 for further detail.

#### 4.3.2 Audit & Risk Committee (ARC)

The ARC is authorised by the Board and assigned responsibility to monitor and assess:

- The integrity and effectiveness of the control and risk management framework
- The integrity of the financial statements and the role and effectiveness of, and relationship with, the Firm's external auditors.
- The integrity and effectiveness of the Firm's capital, liquidity regulatory compliance, financial crime and client money arrangements.

#### 4.3.3 Conflicts Committee (ConCo)

The ConCo is authorised by the ARC to identify, consider and advise on conflicts of interest that arise in the Firm's ordinary course of business, and to take steps (as appropriate) to approve and review measures to control the identified conflicts of interest.

#### 4.3.4 Suspicious Transactions and Order Reports Committee (STOR)

The STOR committee is authorised by the ARC and assigned responsibility to review alerts that cannot be closed off by the Compliance surveillance team.

#### 4.3.5 Capital Adequacy Committee (CAC)

The CAC is established under the authority of the ARC, which has delegated to the CAC the responsibility to undertake oversight of matters relating to capital adequacy, liquidity adequacy and contingency funding, and compliance with the Firms regulatory capital and liquidity requirements.

#### 4.3.6 Client Money & Assets Committee (CASSCo)

The CASS Committee is authorised by the ARC and assigned responsibility for the oversight of the Firm's client money policies and procedures.

#### 4.3.7 Operational Resilience Committee (ORC)

The ORC is responsible for overseeing matters related to operational resilience, including the identification of important business services, setting impact tolerances, process mapping, and scenario testing, as well as ensuring compliance with FCA regulations.

#### 4.3.8 Transaction Reporting Steering Committee (TR STC)

The TR STC is established under the authority of the ARC, which has delegated to the TR STC the responsibility to oversee Transaction Reporting risks, quality, timeliness and change management related to RJOL's transaction reporting obligations.

## 5. Own Funds Resources

Pursuant to RJOL's audited financial statements for the financial year ended 31 December 2025, the Firm maintained own funds resources of £28million. The tables below provide a breakdown of the Firm's own funds resources:

Composition of regulatory own funds			
	Item	Amount (£'000)	Source based on reference numbers/letters of the balance sheet in the audited financial statements
<b>1</b>	<b>OWN FUNDS</b>	<b>28,072</b>	
<b>2</b>	<b>TIER 1 CAPITAL</b>	<b>28,072</b>	
<b>3</b>	<b>COMMON EQUITY TIER 1 CAPITAL</b>	<b>28,072</b>	
4	Fully paid-up capital instruments	12,886	Statement of Financial Position
5	Share premium	486	Statement of Financial Position
6	Retained earnings	16,520	Statement of Financial Position
7	Accumulated other comprehensive income	0	
8	Other reserves	174	Statement of Financial Position
9	Adjustments to CET1 due to prudential filters	0	
10	Other funds	0	
11	(-)TOTAL DEDUCTIONS FROM COMMON EQUITY TIER 1	(1,994)	
19	CET1: Other capital elements, deductions and adjustments	(1,994)	Note 13 and 19
<b>20</b>	<b>ADDITIONAL TIER 1 CAPITAL</b>	<b>-</b>	
21	Fully paid up, directly issued capital instruments	-	
22	Share premium	-	
23	(-) TOTAL DEDUCTIONS FROM ADDITIONAL TIER 1	-	
24	Additional Tier 1: Other capital elements, deductions and adjustments	-	
<b>25</b>	<b>TIER 2 CAPITAL</b>	<b>-</b>	
26	Fully paid up, directly issued capital instruments	-	
27	Share premium	-	
28	(-) TOTAL DEDUCTIONS FROM TIER 2	-	
29	Tier 2: Other capital elements, deductions and adjustments	-	

Own funds: reconciliation of regulatory own funds to balance sheet in the audited financial statements				
		a	b	c
		Balance sheet as in published/audited financial statements	Under regulatory scope of consolidation	Cross-reference to template OF1
		As at 31 December 2025	As at 31 December 2025	
<b>Assets - Breakdown by asset classes according to the balance sheet in the audited financial statements (in £'000)</b>				
1	Fixed Assets	556		
2	Subsidiary Investments	1,711		Item 19
3	Other Investments	1,291		
4	Cash at Bank	28,983		
5	Deferred Tax Assets	283		Item 19
6	Trade/ Other Receivables	12,988		
	<b>Total Assets</b>	<b>45,812</b>		
<b>Liabilities - Breakdown by liability classes according to the balance sheet in the audited financial statements (in £'000)</b>				
1	Trade/ Other Creditors	11,291		
2	Accruals/ Deferred Income	3,473		

3	Tax/ Social Security	982		
4	Subordinated Loan	0		
	<b>Total Liabilities</b>	<b>15,746</b>		
<b>Shareholders' Equity (in £'000)</b>				
1	Share Capital	12,886		Item 4
2	Retained Earnings	16,520		Item 6
3	Share Premium	486		Item 5
4	Other Reserves	174		Item 8
	<b>Total Shareholders equity</b>	<b>30,066</b>		

## 6. Own Funds Requirements

### 6.1 Base own funds requirement

The Firm is required to hold own funds that are greater than the own funds requirement. As a non-SNI firm, RJOL's own funds requirement will be the higher of:

- Permanent Minimum Capital ('PMR') – based on the Firm's regulatory permissions.
- Fixed Overhead Requirement ('FOR') – 25% of the Firm's 'relevant expenditure' from the most recent audited financial statements.
- K-Factor Requirement ('KFR') – the total calculated requirement as per MIFIDPRU 4.6.

The below table demonstrates the various components of the Firm's base own funds requirement as at 31 December 2025.

Item	Amounts (£'000) 31 December 2025
<b>Permanent Minimum Requirement ("PMR")</b>	<b>750</b>
<b>Fixed Overheads Requirement ("FOR")</b>	<b>5,953</b>
<b>K-Factor Requirement ("KFR")</b>	<b>4,778</b>
<i>Harm to Client (K-CMH, K-COH)</i>	<i>2,054</i>
<i>Harm to Market (K-NPR)</i>	<i>2,030</i>
<i>Harm to Firm (K-DTF, K-TCD)</i>	<i>694</i>
<b>Total Own Funds Requirement</b>	<b>5,953</b>

### 6.2 Approach to Assessing the Adequacy of Own Funds

To comply with the Overall Financial Adequacy Rule (OFAR), the Firm must hold adequate financial resources to ensure:

- a) the firm is able to remain financially viable throughout the economic cycle, with the ability to address any material potential harm that may result from its ongoing activities; and
- b) the firm's business can be wound down in an orderly manner, minimising harm to clients or to other stakeholders

To ensure compliance with the OFAR, the Firm has conducted the following assessments as part of its annual ICARA process:

**Assessment A:** The Firm has assessed whether additional own funds resources are required to cover risks and elements of risks the Firm is exposed to, that are either not covered or not sufficiently covered

by its K-factor requirement. To assess the Firm's need for additional own funds resources, for the mitigation of harms, RJOL has conducted a detailed harms assessment. This assessment takes into account various harm scenarios that may crystallise and considers how they may impact the Firm, its Clients and the wider Market. The harms assessment considers the effectiveness of the Firm's controls in mitigating harms, and the need for additional resources to mitigate any residual risk.

**Assessment B:** The Firm has assessed the cost of winding down, and whether own funds resources, in addition to the FOR, is required for an orderly wind-down. As part of this assessment, the Firm has considered both the qualitative and quantitative impact of a wind-down and conducted a detailed analysis of the costs associated with a wind-down, the impact of a wind-down on all stakeholders and potential barriers to an orderly wind-down.

## 7. Remuneration Policy and Practices

### 7.1 Remuneration Committee

The Remuneration Committee is responsible for setting and overseeing the implementation of the Firm's remuneration policy and practices. The Remuneration Committee is comprised of the Group General Counsel, Chief HR Officer, and is chaired by an Independent Non-Executive Director.

The role of the Remuneration Committee is to take into account any factors which it deems necessary in order to promote the long-term success of the Company, including:

- Relevant legal and regulatory requirements
- The desire to attract, retain and motivate management and key staff by linking rewards to corporate and individual performance without paying more than is necessary; and
- Adherence to the Company's appetite for risk

The Committee will have responsibility for the oversight and implementation of the remuneration policy covering such matters as:

- Annual review/approval of the remuneration policy statement
- Annual review of the FCA form MIF008
- Identification of Material Risk Takers for the purposes of FCA SYSC 19A
- Review and approval of remuneration policies to ensure:
  - Compliance with regulations.
  - Consistency with the promotion of the Company's effective risk management, business objectives and values.
  - Discouragement of risk-taking that exceeds the Company's tolerated level of risk.
  - Bonuses do not have a detrimental effect on the Firm's ability to meet its capital requirements on an on-going basis.

### 7.2 Material Risk Takers

The firm has applied the following criteria in identifying its "Material Risk Takers" – i.e., those who could have a material impact upon the risk profile of RJOL. An MRT is an individual who is any of the following:

- a member of the management body in its management function.
- a member of the management body in its supervisory function.
- a member of senior management.
- responsible for business units carrying on at least one of the following regulated activities:
  - arranging deals in investments.
  - dealing in investments as agent.
  - dealing in investments as principal.
  - managing investments.
  - making investments with a view to transactions in investments.
  - advising on investments, except P2P agreements; and/or,
  - operating an organised trading facility.
- responsible for the prevention of money laundering and terrorist financing.
- responsible for managing risk.
- responsible for information technology, security or outsourcing.

- in a position to take decisions approving or vetoing the introduction of new products.
- an earner of a high proportion of revenue.
- a senior advisor who can exert key strategic influence.
- a Head of desk.

## 7.3 Types of remuneration

### 7.3.1 Fixed Remuneration

Fixed remuneration reflects a staff member's professional experience, knowledge and work responsibilities, as set out in their job description and terms of employment. It is predetermined and non-discretionary.

### 7.3.2 Discretionary Bonuses

The majority of RJOL's staff are eligible to be considered for a discretionary bonus. In general, the discretionary bonus of Back-Office staff is annual, whereas Front-Office brokers may receive bonuses on a monthly, quarterly, bi-annual or yearly basis. But the factors that are taken into account are essentially the same:

- capability
- conduct
- individual performance
- compliance with regulatory obligations
- financial performance of the relevant business unit (where applicable), of the Company, and of the RJO Group.

Awards are made from a bonus pool, the size of which is dependent on the Board's consideration of:

- the financial success of RJOL in the relevant period.
- not having a detrimental effect on the Firm's ability to meet its capital requirements on an on-going basis.
- its projected performance; and
- the overall profitability and capital position of the wider RJO Group, as well as its own growth strategies and projections.

Annual bonuses for Back-Office staff are paid after:

- the year-end, when the Company is in a position to assess its previous year's financial performance; and
- the completion of staff performance reviews, where the Company is able to assess individual performance for the previous performance year.

In the Front-Office, though successful contribution to the business is most obviously measured in terms of revenue production, the discretionary nature of the awards means that the Company has wide scope to take into account other considerations. These could include, for example, contribution to new workstream development or a positive desk or dealing floor atmosphere, attendance, compliance and diligence, and so on.

### 7.3.3 Formulaic Commission Payout

It is the market norm to reward senior broking staff through payment of a percentage of the revenue that they have produced for the Company. Naturally, the intention is to motivate and reward revenue generation. Their contracts will detail the arrangement and contain an example calculation for the sake of clarity. Bonuses are made on a monthly/quarterly/bi-annual or half-yearly basis, depending on the individual's arrangement with the Company.

Payouts are only made on commission billed and received, no broker benefits from any error or overpayment. There is no vesting period. Any "deferral" might only apply where earned commissions are deemed to be lower than any fixed monthly payment that the individual receives. In such a case, the appropriate amount is deducted from future earned commissions that exceed that monthly sum, until equilibrium is achieved.

Payouts are subject to impact from conduct: every broker is bound to use all proper skill and care and is obliged to comply with all applicable FCA rules. Compliance breaches, fines by exchanges and regulators, any client debit balances, errors and other similar risk matters could all reduce the overall payment to the individual. The contracts expressly recognise the Company's and broker's obligation to comply with the FCA's Remuneration Code, as may be amended from time to time.

### 7.3.4 Ex-Post Risk Adjustment

As well as encouraging and rewarding those who contribute to its continued success, RJ O'Brien believes that no-one should benefit from their wrongdoing.

This principle is also reflected by the FCA in its approach to how those in a regulated environment are remunerated. The UK's Investment Firms Prudential Regime (IFPR) introduced a new remuneration code which affects the Company and its employees and contractors directly.

"Ex-post risk adjustment" is the reduction, following the crystallisation of a specific risk or poor performance/misconduct outcome, in the amount of variable remuneration to which an individual would otherwise have been entitled. It includes:

- reducing current year awards.
- the application of "malus" – i.e., reducing or cancelling a future or deferred award; and
- claw back – the recouping of already vested awards.

In the event that any action or inaction by anyone working for RJOL has a material impact on the categories listed below, the Company will consider adjusting a person's variable remuneration, whether past, present or future.

The Company will look at all of the circumstances surrounding any in/action that has a materially negative effect in the following areas:

- the impact on its customers, counterparties and the wider market,
- the impact of the failure on its relationships with its other stakeholders including, shareholders, employees, creditors, the taxpayer and regulators,
- the cost of fines and other regulatory actions,
- direct and indirect financial losses attributable to the relevant failure; and
- reputational damage.

The type of cases where an ex-post risk adjustment might have to be made would be, for example, if anyone working for RJOL:

- has participated in or was responsible for conduct which resulted in significant losses to the Company or relevant business unit.
- has acted in any manner which has brought, or is likely to bring, the Company or any Group company into material disrepute.
- acted in a fraudulent or dishonest manner.
- has failed to meet appropriate standards of fitness and propriety; or
- acts in any materially wrong way, even if those matters only come to light after the bonus has been paid.

## 7.4 Quantitative Remuneration Disclosures

The below tables quantify the headcount and remuneration paid by the Firm in the financial year ending the 31<sup>st</sup> of December 2025. For additional detail, the tables segregate the MRT's into two categories: Front-Office and Senior Management. This is used to differentiate the MRT's who hold a control function from the ones who are linked to revenue generation.

### Total Remuneration (£)

Type	Fixed Remuneration	Variable Remuneration	Total Remuneration
All Staff	10,136,133	9,989,743	20,125,876

### Material Risk Takers/Headcount

Type	No. of Employees
Front Office MRT's	13
Senior Mgmt MRT's	13
Non-MRT's	97
<b>Total</b>	<b>123</b>

### Fixed vs Variable Remuneration (£)

Type	Fixed Remuneration	Variable Remuneration	Total Remuneration
Front Office MRT's	1,062,064	6,114,043	7,176,107
Senior Mgmt MRT's	2,234,769	898,740	3,133,509
Non-MRT's	6,839,300	2,976,960	9,816,260
<b>Total</b>	<b>10,136,133</b>	<b>9,989,743</b>	<b>20,125,876</b>

All variable remuneration was paid in cash.

### Guaranteed Remuneration/Severance Payments

The Firm does not currently offer guaranteed variable remuneration and no MRT's were awarded any severance payments in the financial year.

### Deferred Remuneration

The Firm does not currently offer deferred remuneration and as a result none was awarded in the financial year

